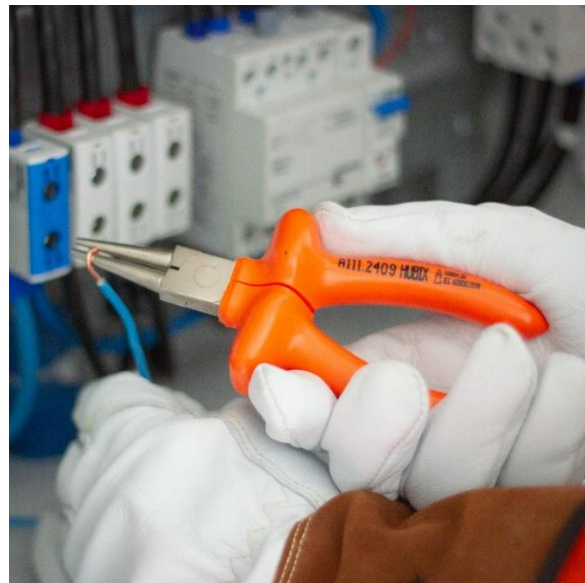


A111.2409**TECHNICAL SHEET**
2022.02**hubix**

SAFETY IN POWER

**HS-5 Insulated Round Nose Pliers L=160 mm
up to 1 kV AC / 1,5 kV DC****PHOTOS**

Product compliant with the requirements of EN IEC 60900:2018 standard

Length: 160 mm

Max. cross-section of the shaped conductor: 10 mm²

Weight: 160 g

Length and weight tolerances are $\pm 2\%$. Due to continuous product development, product appearance may differ slightly from that shown in the photos.

CHARACTERISTICS

Insulated tool made of CrV steel. Insulation made of plastisol (PVC), immersion technology. Double layer tool insulation in contrasting colors, white and orange. The thickness of each with layers of at least 1 mm. Jaws round and smooth. The handles of the pliers are equipped with grip stops to prevent the hands from slipping towards the work head.

APPLICATION

The pliers are used for live work up to 1 000 V AC or up to 1 500 V DC, at switchgear devices, cable lines and overhead lines. The pliers are designed for shaping wires and cables (Al, Cu, steel) with cross sections up to 10 mm².

STORAGE AND MAINTENANCE

Store and transport the pliers in a bag or toolbox separate from other tools to avoid mechanical damage. Store the pliers in dry rooms away from heat sources, in a non-aggressive chemical atmosphere. Protect from sunlight.

The pliers should be cleaned after each use. Use a dry cloth for cleaning. If it is very dirty, clean the pliers with a cloth dampened with water and mild detergent or with a cloth dampened with ASOREL and dry it thoroughly.

HS-5 Insulated Round Nose Pliers L=160 mm
up to 1 kV AC / 1,5 kV DC
EXAMINATION

A visual inspection of the pliers should be made before each operation. Carry out a periodic inspection, also by visual inspection, once a year.

Visual inspection includes checking:

- no visible defects in the pliers,
- no visible damage to the pliers insulation,
- legibility and completeness of the pliers marking.

Pliers damaged (mechanical damage), heavily worn (insulation part missing, damaged) or dirty must not be used for live work. Injury resulting in to expose the inner (white) insulation layer eliminates the possibility of further use of the tool in live work. If the pliers are damp, dry it thoroughly before use.

CAUTION!

In case of doubt, after the visual inspection, the tool should be re-tested for electric strength or withdrawn from use in live work.

FREQUENCY TESTS

For check and periodic inspection to be carried out in according to table.

	CHECK	PERIODIC INSPECITON
Who	Manager of team	Supervision
When	Before use	Once a year
How	Visually	Visually

**Unless instructions say otherwise*