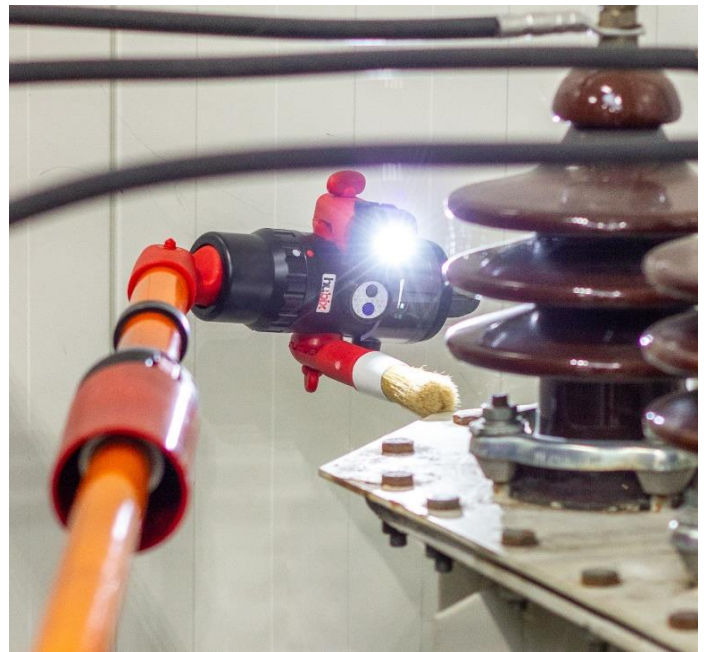


**Electrically Insulating Inspection Camera
up to 36 kV AC / 54 kV DC**

PHOTOS



Product compliant with the requirements of EN 60382-2:2010 standard

Max image sizes: 9216×6912
Video resolution: 4K Ultra HD: 3840 × 2160, max. 60 fps
2,7K: 1920 × 1080, max. 60 fps
HD: 1920 × 1080, max. 60 fps
Video recording modes: HDR/Time lapse/Slow Motion (video resolution: 1080p 120/240 fps)
Memory card capacity: 64 GB
Auto tracking function
Live broadcasts (Wi-Fi livestreaming)
Panoramic photo function
Weight: 545 g

The weight tolerance is ± 2%. Due to the continuous development of the product, the appearance of the product may slightly differ from the one shown in the photos.

CHARACTERISTICS

Portable, remotely controlled, and stabilized electro-insulating camera. It has a universal connector made in accordance with IEC60832-2 for mounting on an insulating telescopic stick or a stick extension, and at least two universal heads in accordance with IEC 60832-2 intended for mounting accessories. The camera housing cover is made of polycarbonate in the shape of a hemisphere.

The camera is controlled via an application available for iOS 11.0 and later and Android 7.0 and later with a smartphone or tablet.

APPLICATION

The camera is intended for inspection of station equipment with alternating voltage up to 36 kV or direct voltage up to 54 kV. The camera's design allows it to be used in indoor switchgear and overhead lines. Used in inspections of overhead lines, inspections of invisible parts of indoor equipment, reading nameplates, etc. Possibility to add integrated LED lighting, battery powered **A223.1051** flashlight (max. 400 lm), allows recording and taking photos in dark rooms. Brush **A332.0402** allows to remove dirt from device elements. When using a stick with a metal head, it is possible to install a stick extension with a **B223.0206** head cover.

Electrically Insulating Inspection Camera up to 36 kV AC / 54 kV DC

SAFETY IN POWER

STORAGE AND MAINTENANCE

The camera should be stored and transported in a case, separate from other devices, to avoid mechanical damage. The camera contains delicate parts that can be damaged by excessive force. Store the camera in dry rooms, away from heat sources, in a chemically non-aggressive atmosphere. Protect against sunlight.

It is recommended to put a protective cover on the housing.

The camera should be cleaned after each use. Use only a dry cloth for cleaning. Do not use any cleaning agents or solvents.

EXAMINATION

Before starting work, the camera should be visually inspected. Periodic control, including visual inspection, should be carried out once a year. The visual inspection includes checking:

- no visible damage to the camera housing,
- correct operation of the camera,
- correctness of its mounting on the stick,
- legibility and completeness of the marking.

A damaged (mechanical damage to the housing) or a malfunctioning camera cannot be used in live work.

CAUTION!

In case of doubt, after the visual inspection, the camera should be re-tested for resistance to bridging or withdrawn from use in live work.

Electrical tests of resistance to bridging should be performed in accordance with 5.3.2 point of the EN 61481-1:2014 standard.

FREQUENCY TESTS

For check and periodic inspection to be carried out in according to table.

	CHECK	PERIODIC INSPECITON
Who	Manager of team	Laboratory
When	Before use	Once a year
How	Visual inspection and correct operation	visual inspection, correct operation and electrical test

**Unless instructions say otherwise*