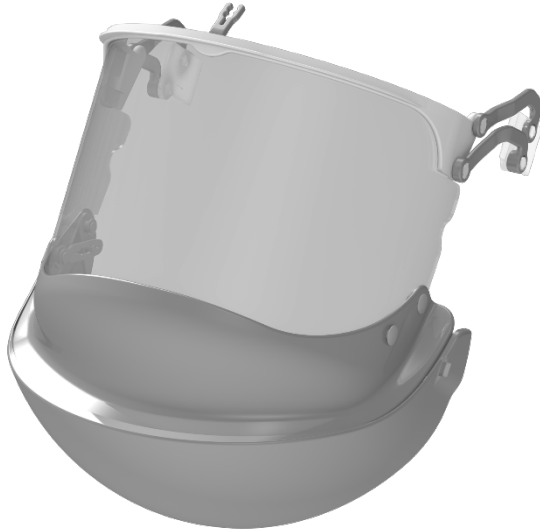


Class 2 Face Shield, Complete ARC-E40HT**PHOTOS**

Product compliant with the requirements of EN 166:2005 i GS-ET 29:2010-2 standard
ASTM F2178/F2178M-20

FACE PROTECTION	
EN 166 Personal eye-protection - Specifications	
Optical class	2
Resistance to impact of high velocity and medium energy particles	B
Protection against drops and splashes of liquid	3
Protection against electric arc	8
Protection against molten metals and hot solids	9
Resistance to fogging	N
EN 170 Personal eye-protection - Ultraviolet filters - Transmittance requirements and recommended use	
Protection level of the UV filter	2C-2
GS-ET 29 Electric arc protection	
Electric arc protection (4kA/0,5s)	Box test
	Class 2 / APC 2
Visible light transmittance VLT	<50%
	Class 0
ASTM F2178 Arc Protection	
ATPV Arc Thermal Protection Value	36 cal/cm²

Total visor height: 200 mm

Visor thickness: 1.9 mm

Weight of complete visor: 250 g

Length and weight tolerances are $\pm 2\%$. Due to continuous product development, product appearance may differ slightly from that shown in the photos.

Class 2 Face Shield, Complete ARC-E40HT

SAFETY IN POWER

CHARACTERISTICS

The complete face shield is an interchangeable component of SECRA-2 type helmets. It is composed of a transparent visor made of polycarbonate, the links (polyacetal) with their fastening (polyamide) and the latch (polyacetal), and a chin guard made of polycarbonate). The visor of the face shield has an outer coating that is resistant to scratches and damage by fine particles, and an inner coating to prevent fogging.

APPLICATION

The complete face shield ARC-E40HT is designed to protect the user's face against thermal hazards caused by an electric arc (class 2 - Box Test). It also provides protection against impact from high-velocity and medium-energy particles, from drops and splashes of liquid, and from molten metals and hot solids. The shield also has UV protection filters. The face shield provides full protection only in combination with a SECRA type helmet.

STORAGE AND MAINTENANCE

The face shield should be cleaned after each use. **Do not use solvents, detergents, or abrasives for cleaning.** Clean the face shield only with soap and water. Dry thoroughly after washing. Use the microfibre cloth supplied with each helmet to clean the visor surface.

Protect from mechanical damage, compression and from sunlight, moisture, exhaust fumes etc. Do not place the face shield directly against room windows or car windows. Storage at (20±15) °C is recommended.

EXAMINATION

Check the helmet with face shield before each use. An annual visual inspection by a suitably trained person is recommended to determine the suitability of the face shield for further service.

Visual inspection includes checking:

- no visible damage of the face shield,
- the face shield operates correctly,
- period of use of helmet with face shield.

The visor that is mechanical (cracks, deep scratches, perforations), or chemical (discoloration, tarnishing, etc.) damage to the face shield or its malfunction is detected, and if doubts arise as to the provision of optimum protection, the face shield should be replaced or withdrawn from use.

In the event of dampness, the face shield should be thoroughly dried before use.

FREQUENCY TESTS

For check and periodic inspection to be carried out in according to table.

	CHECK	PERIODIC INSPECITON
Who	User	Supervision
When	Before each use	Once a year *
How	Visually (visual inspection)	Visually (visual inspection)

*Unless instructions say otherwise