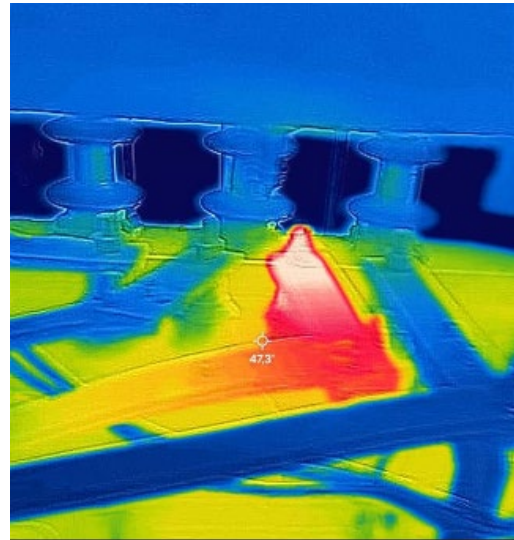


**Electro-insulating thermal imaging camera up to 36 kV AC /
54 kV DC**

PHOTOS



Manufacture of the product in accordance with the standard: PN-EN 60832-2:2010

Field of view: 54°
Thermal resolution: 160 x 120 (19,200 pixels)
Temperature measurement range: -20 °C ; 400 °C
Focus: fixed focus
Basic accuracy: 5 % / 3 °C
Refresh rate: 8.7 Hz
Thermal sensitivity: 70 mK
Weight: 560 g

Weight tolerance is ±2%. Due to continuous product development, product appearance may differ slightly from that shown in the photos.

CHARACTERISTICS

Portable, remotely controlled and stabilized thermal imaging camera. It has a multi-splined handle made in accordance with PN-EN 60832-2 for mounting it on an insulating telescopic rod. The housing is made of polyamide. The top of the camera has a rotating head protecting the lens, a USB-C charging port and a power button. The camera is controlled using an application available for iOS and Android systems.

NOTE! When the application is paired with the camera, the mobile device can only connect to the internet via mobile data transmission (not via Wi-Fi)

APPLICATION

The camera is designed for thermal inspections of power station devices under alternating voltage of up to 36 kV or direct voltage of up to 54 kV. It is used in the inspection of overhead lines, invisible parts of interior devices and enables the measurement of the temperature of active elements of power devices in the PPN technique under voltage. The camera is adapted to record video and take photos. The camera view includes a live image preview modification function.

**Electro-insulating thermal imaging camera up to 36 kV AC /
54 kV DC**
STORAGE AND MAINTENANCE

The camera should be stored and transported in a case, separate from other devices, to avoid mechanical damage. The camera contains delicate elements that can be damaged by excessive force. Store the camera in dry rooms, away from heat sources, in a chemically non-aggressive atmosphere. Protect from sunlight. The camera should be cleaned after each use. Use only a dry cloth for cleaning. Do not use any cleaning agents or solvents.

EXAMINATION

Before each start of work, the camera should be inspected. Periodic inspections, also consisting of inspections, should be carried out once a year.

The inspection includes checking:

- the absence of visible damage to the camera housing,
- the correct operation of the camera,
- the correctness of its mounting on the rod,
- the legibility and completeness of the marking.

A damaged camera (mechanical damage to the housing) or one that is malfunctioning cannot be used in live work.

ATTENTION!

In case of doubts after the inspection, the camera should be subjected to another test of resistance to bridging or withdrawn from use in live work.

Electrical tests of resistance to bridging should be performed in accordance with point 5.3.2 of the PN-EN 61481-1:2015-04 standard

FREQUENCY TESTS

For check and periodic inspection to be carried out in according to table.

	CHECK	PERIODIC INSPECITON
Who	Team Leader / Foreman	Supervision
When	Before each use	Once a year*
How	Visually (inspection) and correct operation	Visual inspection, correct operation and electrical testing

*Unless instructions say otherwise